



Our **REACH** values stand for **Respect. Engage. Aware. Celebrate. Honest.**

Me mahi tahi tatou mō te oranga o te katoa – We should work together for the wellbeing of everyone

Kia ora whānau

**Yr 3-6 swimming lessons** at Swimsation in Te Atatu Peninsula have begun and will run every Friday until the end of this term. Please send your child to school with togs and a towel in a plastic bag on a Friday. Buses depart school at 9am. Water safety is a critical part of our Health curriculum and is compulsory not optional.

**Spell-a-thon** testing has been completed! The deadline for sponsorship money was 30<sup>th</sup> August. If you still have money to deposit, donations can still be made through our school shop on our website or at the office. Spell-a-thon is our biggest annual fundraiser and all proceeds go to the new playground that will be installed at the end of the asphalt court. We are hoping that we can make a start of this project towards the end of this year. Huge thanks to those who have already donated. Our celebration assembly was held today with lots of prizes given out, including a \$100 Countdown voucher for the highest student donation received.

**Enrolment Scheme.** We are working closely with the Ministry to ensure that the enrolment scheme is in place for Term 2 2024. We are currently awaiting the documentation from the Ministry of Education.

**Consultation Guidelines** have been introduced by the Ministry of Education to ensure that schools are consulting with the local community and school whanau. We did our Health and PE consultation and based on the feedback we have attached the DRAFT Health statement. Please take a few minutes to have a read of this and if you have any comments or questions, please feel free to email me on [leishab@lincolnheights.school.nz](mailto:leishab@lincolnheights.school.nz). If we have received no feedback by the end of this term (22<sup>nd</sup> September), we will publish the draft as our 2023 Health Delivery Statement on our school website. This statement will then be up for review in 2025.

**A key consultation point is accessing whanau voice on our Strategic Plan.** Our current Strategic Plan was developed in 2022 and is due for review in 2025. To ensure it is remaining 'fit for purpose' the Board is very keen to get some parents feedback on our Strategic Aim 3 and what we hope we will achieve in the next two years. The Strategic Plan guides our school's Annual Plan and sets the direction of the school. It is a key piece of mahi undertaken by the Board and vital to developing the direction of the school and ensuring it is equitable and meeting legislative outcomes.

<p>Ensure children have an understanding of their roles and responsibilities as citizens of Aotearoa and are active in creating a positive environment through partnership, protection and participation.</p>	<p>the school gives effect to Te Tiriti o Waitangi including by:</p> <ul style="list-style-type: none"> <li>working to ensure its plans, policies and local curriculum reflect local tikanga Māori, mātāuranga Māori and te ao Māori</li> <li>taking all reasonable steps to make instruction available in tikanga Māori and te reo Māori</li> <li>achieving equitable outcomes for Māori students.</li> </ul>	<p>Objective 4: Future of learning and work – Learning that is relevant to the lives of New Zealanders today and throughout their lives</p>	<p><b>Focus on nurturing and developing future focused, culturally and socially conscious, happy citizens</b></p>		
	<ul style="list-style-type: none"> <li>is a physically and emotionally safe place for all students and staff</li> <li>gives effect to relevant student rights</li> <li>takes all reasonable steps to eliminate racism, stigma, bullying, and any other forms of discrimination within the school</li> </ul>	<p>PB4L expectations are evident in classrooms, teacher and student language and behaviour in and out of classrooms - reduction in PB4L incidents, reduction in disciplinary actions.</p>	<p><b>What will you see?</b></p> <p>There will be a strong reciprocal relationship with local Iwi</p> <p>Our school Board will reflect the diversity of our school community</p> <p>Our students will be engaged in student groups and have opportunity to be heard</p>	<p><b>How will we achieve it?</b></p> <p><b>Partnership</b></p> <ul style="list-style-type: none"> <li>Board of Trustees and Senior Leadership will work together to strengthen their relationship with the local Iwi – with support from Ministry of Education and Kāhui Ako</li> <li>Teachers will build strong learning focused relationships with whanau, mutually respectful and honouring the role parents have as first teachers – regular contact with whanau will be established early in the year with regular updates and opportunities to share positive learning</li> <li>Our school Board will work with the community to actively encourage representation from unrepresented or under represented groups of our school community</li> <li>Senior and Middle Leadership, along with M-Unit holders will seek opportunities for students to participate in community events aimed at raising youth issues – such as parks, transport, sustainability, sports and recreation.</li> </ul>	<p><b>How will we measure our success?</b></p> <p>Board self-review tool will show improved outcomes and understanding by Board Members</p> <p>Student survey (Wellbeing at School) will show a shift of 25% improvement in</p> <ul style="list-style-type: none"> <li>school activities at break times</li> <li>sense of belonging</li> <li>how my parents feel about school</li> </ul>
			<p>Students will have many opportunities to 'Lead' and participate in cultural, academic and sporting events within the school and wider community</p> <p>Service and serving our community will be integral to our school culture</p> <p>Whanau will be active participants in all school activities and will have opportunities to initiate and lead events</p>	<p><b>Participation</b></p> <ul style="list-style-type: none"> <li>Priority will be given to ensuring student lead opportunities are well resourced – including resourced by staff</li> <li>Authentic connections with community groups will be identified, nurtured and maintained – ECE, Ryman, Iwi</li> <li>Wananga opportunities will be established and resourced to ensure that our community has the opportunity to lead learning and share knowledge</li> <li>Sporting, cultural, arts and academic opportunities will be identified and shared with the school community so that any barriers can be identified and overcome to enable maximum participation</li> <li>Whanau events will be in response to a need identified by them. They will be well resourced (including food).</li> </ul>	<p>Student survey (Wellbeing at School) will show a shift of 25% improvement in</p> <ul style="list-style-type: none"> <li>Student participation in activities for year 5-8 students</li> </ul> <p>Community survey RE: contributions/service to the community – will have a 60% return rate (based on whanau numbers)</p> <p>Post whanau event survey will show 80% satisfaction</p>
			<p>Students will have a strong sense of identity and self-belief</p> <p>There will be zero barriers to participation in school wide opportunities – camp, cultural events</p> <p>Te Reo will be used positively, naturally and actively throughout the school for more than greetings and basic instructions</p> <p>Students will demonstrate a strong sense of fairness and fair play</p>	<p><b>Protection</b></p> <ul style="list-style-type: none"> <li>Student's culture and identity will be recognised and celebrated – through use of language, signage, cultural events and days</li> <li>In Kahukura and Moemoe Fou, students unique culture and heritage will underpin all decisions – driving review and change</li> <li>Te Reo will be used daily and naturally across the school – greetings and basic conversation. All staff and students will be able to say their pepeha or mihi</li> <li>Steps will be undertaken to open a Maori bilingual class in 2025/26, including adequate resourcing</li> <li>School will prioritise environmental sustainability projects that enhance and protect the local whenua, including native tree planting, Enviro School, Gardent to table and the use of sustainable products.</li> </ul>	<p>Student survey (Wellbeing at School) will show a shift of 25% improvement in</p> <ul style="list-style-type: none"> <li>Students feeling valued</li> <li>Incidents of 'bullying'</li> </ul> <p>School Enviro Schools ranking will be Green Silver</p> <p>Native garden walk will be established and enjoyed by community</p> <p>Reduction of 25% in non-recyclable rubbish each year, increase/improvement in recycling</p>

Leisha Byrnes

**PRINCIPAL**



## Lincoln Heights **Draft** statement of Health Education

Our school vision is that all children will have the opportunity to reach their own potential and that together we are stronger. Our motto is 'Step by step together we REACH new Heights.

Our school has both values and expectations which guide how we relate to each other.

Our expectations are:

**RESPECT** for self, whanau, elders and the environment

**ENGAGED** in our learning, our school and our community

**AWARE** of who we are, where we come from and where we are going

**CELEBRATE** our successes, knowledge, traditions and diversity

**HONEST**, being true to who you are and what you believe

Our values are:

**We think and Learn together**

We support and nurture each other, celebrating our success

**We value and appreciate each other**

We trust and support each other, creating a community where learning and fun is encouraged

**We have a 'can do' attitude**

We never give up, even when things are hard because we know success requires effort, courage and self-belief

**We celebrate diversity**

We nurture the development of a strong sense of self-belief and respect for all cultures, languages, beliefs and traditions

At Lincoln Heights School we are growing people who are respectful, resilient, adaptable and curious, who understand that they have a voice and can make a difference in the world.

We offer Health Education that gives every child opportunities to develop skills to think critically, make positive choices, understand their own health needs and support those around them. These skills will help them to be positive members of their communities.

At Lincoln Heights School we teach Health through both an integrated and stand alone subject specific lessons. We use the Whare Tapa Rima Framework to provide contexts for students to develop skills to become, physically, mentally, emotionally and spiritually healthy, with a strong connection to the whenua (land).

We explore concepts such as: hauora and wellbeing; friendships and relationships; managing change and building resilience; food for health and wellbeing; sexuality and gender; alcohol and other drugs. Throughout these topics, students will develop their skills within the key competencies; to think critically, manage themselves, participate and contribute and relate to others.

Health Education ensures students understand the values and key competencies of the New Zealand curriculum. We teach in a way that helps our children to develop the skills they need to fully participate in an ever changing world. We want to ensure that they have the skills and knowledge to be confident, socially responsible and well connected active members of society.

Health is taught by qualified teachers or outside providers (alongside the classroom teacher) who are qualified to teach these specialist areas of Health Education. When outsourcing these areas, careful consideration is made to the key messages being taught to ensure they align with our school values, strategic plan and the achievement aims of the New Zealand Curriculum and the individual needs of our students.

Health Education is provided to every student at Lincoln Heights School. Some students may need further support or guidance and we pride ourselves on providing a pastoral team who can provide this support. Where needed, our pastoral team will build on knowledge acquired in the health classes and in communication with whanau.



## BOARD OF TRUSTEES

Our trustees are:

Raewyn Clark, Presiding Member     [bot@lincolnheights.school.nz](mailto:bot@lincolnheights.school.nz)  
 Ben Lynch, Kiri McCabe, Doreen Retimana, Ken Tuioi, Sarah Pope and Gordon Irving (Staff Trustee)

## WHAT'S COMING UP

<b>TERM THREE</b>		
Week 8	Wednesday, 6 <sup>th</sup> September  Friday, 8 <sup>th</sup> September	Spell-a-thon prizegiving, 2pm Kapahaka lessons in hall, 3.30pm-4.30pm Samoan Parent Network mtg, Potu Lima, 3.30pm-4.30pm Yr 3-6 swimming lessons, Te Atatu Peninsula Kauri team Auckland Museum trip, departing school 9.30am
Week 9	Monday, 11 <sup>th</sup> September  Tuesday, 12 <sup>th</sup> September  Wednesday, 13 <sup>th</sup> September Friday, 15 <sup>th</sup> September	MOTAT Science Day at school for Yrs 4-6, hall Siva dance lessons in hall, 3.30pm - 4.30pm MOTAT Science Day at school for Yrs 4-6 Leeataata Pre-School visit to Moemoe Fou Kapahaka lessons in hall, 3.30pm-4.30pm Yr 3-6 swimming lessons, Te Atatu Peninsula
Week 10	Monday, 18 <sup>th</sup> September Tuesday, 19 <sup>th</sup> September Wednesday, 20 <sup>th</sup> September  Thursday, 21 <sup>st</sup> September Friday, 22 <sup>nd</sup> September	Siva dance lessons in hall, 3.30pm - 4.30pm Moemoe Fou to Howick Historical Village NW Yr 7/8 Volleyball, Trusts Stadium Kapahaka lessons in hall, 3.30pm-4.30pm Board meeting, 5.30pm, staffroom Rooms 1 & 3 to The Twits, Pumphouse Theatre Yr 3-6 swimming lessons, Te Atatu Peninsula <b>Last day Term Three. School closes 3pm</b>
<b>TERM FOUR</b>		
Week 1	Monday, 9 <sup>th</sup> October  Wednesday, 11 <sup>th</sup> October  Saturday, 14 <sup>th</sup> October	Term Four begins at 8.50am Siva dance classes in hall, 3.30pm - 4.30pm Mastercard Financial Literacy, 9am-1pm Kapahaka lessons in hall, 3.30pm-4.30pm NATIONAL GENERAL ELECTIONS, LHS hall, from 9am - 7pm

***Our motto – In The Gate by Half Past Eight Guarantees You Won't be Late!***

## GENERAL NOTICES

- ❖ **Parent supervised Playgroup sessions** run by Auckland Kindergarten operate from the room closest to the Doone Place school entrance on Tuesdays, Wednesdays and Thursdays from 9.30am until 12.30pm. Email Manager Fonda Rowe at [fonda.rowe@aka.org.nz](mailto:fonda.rowe@aka.org.nz) for more information.
- ❖ SKIDS provide **on-site quality after school care** for LHS students Monday to Friday from 3pm until 6pm during term time. Contact SKIDS direct by emailing [lincolnheights@skids.co.nz](mailto:lincolnheights@skids.co.nz) or phoning 021 922 521.

## UPCOMING EVENTS



Tēna koe

The 2023 General Election will be held in October and we want every eligible New Zealander to enrol and vote.

Voting starts on Monday 2 October and finishes at 7pm on election day, Saturday 14 October.

We'd like your help to get as many New Zealanders as possible to have their say. Let's work together to make that happen.

On our website [vote.nz](http://vote.nz) you'll find information to share with your friends and whanau.



## CELEBRATIONS

Room 25 students Enviro group have been doing some great mahi on preparing the worm bin as part of our eco project.



NZ School Trustee mid-term elections are coming up in November this year. Our school will have two vacancies and we encourage parents who think they may have the appropriate skill set, to stand for nomination.

The elections timeline is as follows:

Call for nominations by Wednesday 20<sup>th</sup> September. A nomination form will be posted to parents of students on our roll.

Nominations close at midday, Monday 9<sup>th</sup> October

If more than two nominations are received, voting papers will be issued by post Monday 16<sup>th</sup> October

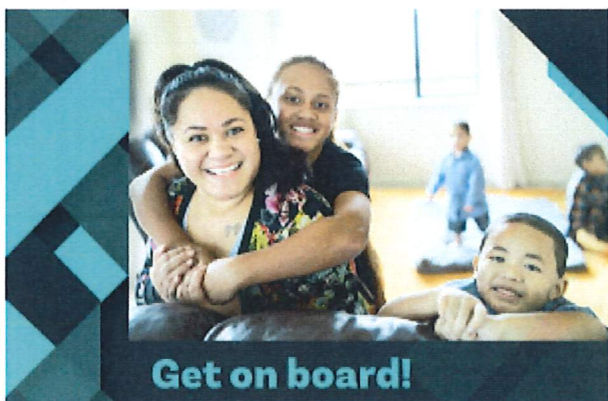
Election Day is Monday 13<sup>th</sup> November 2023

Last date to accept postal votes Saturday 18<sup>th</sup> November

Votes are counted by Sunday 19<sup>th</sup> November

Members take office Monday 20<sup>th</sup> November 2023

A simple explanation of what Trustees do is attached to this newsletter. If you have any further questions please don't hesitate to contact the Presiding Member Raewyn Clark at [bot@lincolnheights.school.nz](mailto:bot@lincolnheights.school.nz) or email the Returning Officer Jill Taylor at [jillt@lincolnheights.school.nz](mailto:jillt@lincolnheights.school.nz)



**Get on board!**

Nominate yourself or someone you know to be a school board member

Place your returning officer contact details here and your school logo to the left

  
SCHOOL BOARD  
ELECTIONS



## What is a school board of trustees?

Almost all state and state integrated schools in New Zealand have a board of trustees. School board membership includes parent representatives, a staff representative, a student representative (where there are students above year 9) and the principal. Your board may also include other types of trustees. Contact your school for more information on the composition of your school's board.

## Who can become a trustee?

Parents, caregivers and people from the wider community can put their name forward to be on a school board during the board of trustee elections.

## What do trustees do?

The board is accountable to its parents and community and for student progress and achievement. Here are some specific things a board does:

- Sets the strategic direction and plans for the school and monitors the school's progress against them.
- Monitors and evaluates student progress.
- Oversees the management of staff, property, finances, curriculum and administration.
- Ensures that the educational needs and aspirations of Maori learners, Pasifika learners and learners with special learning and behaviour needs are identified, planned for and met.
- Fulfills the intent of the Treaty of Waitangi by valuing and reflecting New Zealand's dual cultural heritage.
- Appoints and supports the principal and assesses their performance.

## What skills do trustees need?

Trustees are active leaders in their schools and need to work well in a team, ask challenging questions and have good communications skills. Boards need a balance of skills and experiences around the table to ensure effective processes for planning, monitoring, reporting and reviewing of the school's performance are in place.

## What help do school trustees get?

New Zealand School Trustees Association provides free advice around employment and governance, support and resources. NZSTA also provides a variety of professional development opportunities for trustees.

## What is a school board of trustees?

Almost all state and state integrated schools in New Zealand have a board of trustees. School board membership includes parent representatives, a staff representative, a student representative (where there are students above year 9) and the principal. Your board may also include other types of trustees. Contact your school for more information on the composition of your school's board.

## Who can become a trustee?

Parents, caregivers and people from the wider community can put their name forward to be on a school board during the board of trustee elections.

## What do trustees do?

The board is accountable to its parents and community and for student progress and achievement. Here are some specific things a board does:

- Sets the strategic direction and plans for the school and monitors the school's progress against them.
- Monitors and evaluates student progress.
- Oversees the management of staff, property, finances, curriculum and administration.
- Ensures that the educational needs and aspirations of Maori learners, Pasifika learners and learners with special learning and behaviour needs are identified, planned for and met.
- Fulfills the intent of the Treaty of Waitangi by valuing and reflecting New Zealand's dual cultural heritage.
- Appoints and supports the principal and assesses their performance.

## What skills do trustees need?

Trustees are active leaders in their schools and need to work well in a team, ask challenging questions and have good communications skills. Boards need a balance of skills and experiences around the table to ensure effective processes for planning, monitoring, reporting and reviewing of the school's performance are in place.

## What help do school trustees get?

New Zealand School Trustees Association provides free advice around employment and governance, support and resources. NZSTA also provides a variety of professional development opportunities for trustees.

## What is a school board of trustees?

Almost all state and state integrated schools in New Zealand have a board of trustees. School board membership includes parent representatives, a staff representative, a student representative (where there are students above year 9) and the principal. Your board may also include other types of trustees. Contact your school for more information on the composition of your school's board.

## Who can become a trustee?

Parents, caregivers and people from the wider community can put their name forward to be on a school board during the board of trustee elections.

## What do trustees do?

The board is accountable to its parents and community and for student progress and achievement. Here are some specific things a board does:

- Sets the strategic direction and plans for the school and monitors the school's progress against them.
- Monitors and evaluates student progress.
- Oversees the management of staff, property, finances, curriculum and administration.
- Ensures that the educational needs and aspirations of Maori learners, Pasifika learners and learners with special learning and behaviour needs are identified, planned for and met.
- Fulfills the intent of the Treaty of Waitangi by valuing and reflecting New Zealand's dual cultural heritage.
- Appoints and supports the principal and assesses their performance.

## What skills do trustees need?

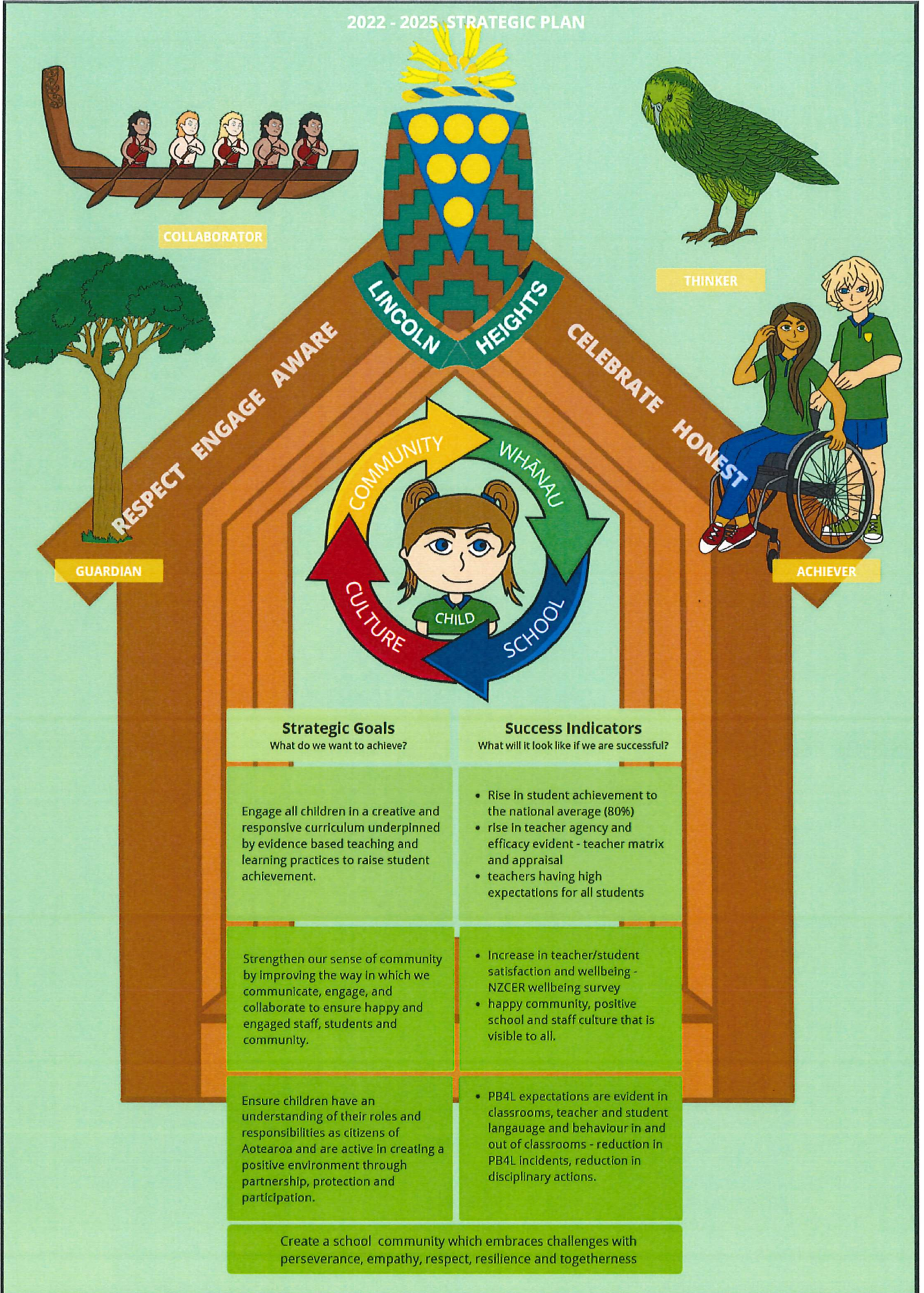
Trustees are active leaders in their schools and need to work well in a team, ask challenging questions and have good communications skills. Boards need a balance of skills and experiences around the table to ensure effective processes for planning, monitoring, reporting and reviewing of the school's performance are in place.

## What help do school trustees get?

New Zealand School Trustees Association provides free advice around employment and governance, support and resources. NZSTA also provides a variety of professional development opportunities for trustees.



2022 - 2025 STRATEGIC PLAN





# Lincoln Heights School

Thanks to the below businesses for sponsoring our school app:



Welcoming new patients now

394 Don Buck Road, Massey, Auckland

P 09 831 0170 | E doctors@masseymedicalcentre.co.nz

Signature Cakery  
BY ALI  
Every Flavour Has A Story

BRIDGESTONE TYRE CENTRE Westgate

Ngā Tamariki  
Pūwāhi o Tāmaki  
AUCKLAND  
KINDERGARTEN  
ASSOCIATION  
We're in your neighbourhood!  
aka.org.nz



**AMOS**  
DETAILING LTD



If you would like to advertise on the Lincoln Heights School Skool Loop App please email [Content@skoolloop.com](mailto:Content@skoolloop.com)



To download our app:

In Google Play & App Store

search 'Skool Loop' & choose Lincoln Heights School once installed.



**MORRISONS**  
FUNERALS

Tap  
Here



**Clive Whalen**

**BARFOOT & THOMPSON**

The right salesperson makes all the difference

PLUMBING  
**INSIDE  
OUTSIDE**  
ROOFING

Servicing Auckland's Plumbing & Roofing Needs