



Our **REACH** values stand for **Respect. Engage. Aware. Celebrate. Honest.**

Kia hiko Kotahi tatou, hei tutuki ki ngā taumata hou. - Step by step, together we REACH new heights

**Office cellphone: 021 022 69879**

**Absences cellphone: 022 0433 026**

Kia ora whānau

There are only 9 and a half days of school left for 2024 we are very busy with graduation preparation, prizegivings, Senior Dinner and Dance and of course **Fiafia which is this Friday night from 4.00pm**. As usual we will be performing in front of rooms 5 and 6, so bring along a picnic blanket and join us on the top field! We hope to see our whanau at the school for this spectacular end of year event that our children have been spending time on practising. I have to say I have been enjoying the beautiful singing. There will be an assortment of food for sale as well.

Our **last newsletter will go out on Monday 16 December** and include our farewells to staff leaving us at the end of the year and welcomes to staff joining us in 2025. It is always bitter sweet when staff leave us to pursue new leadership and teaching opportunities, travel or whanau adventures. While I am sad that we won't have some incredible staff staying, I am super excited to welcome new staff and learn from their knowledge and experiences.



Today was our last **PB4L Mufti day** for 2024 and while there were some amazing outfits, the cutest had to be the tiny reindeer Mr Kite and I found wandering around the field. What an awesome Christmas outfit! It is also great to see our children exploring our environment and having fun climbing trees in the sunshine. With the weather warming up and set to continue into the start of the school year, please remind your child to pack their school hat every day.

**Camp Tupare 2025** – remember that if you pay your child's camp fees before 31 December, you get a \$10 discount. Camp fees can be paid through the School Shop on the website!

The **Summer Reading Programme** is back in 2025.

Research has shown that a child's reading often regresses over the long Christmas break. We aim to keep that 'summer slide' from happening by providing the reading programme in

the Library. Children can pop into the library between 10am and 2pm on certain days, must be accompanied by an adult, and can return and collect books to read. Whanau should have received information to sign up for the programme. If you haven't signed up, contact Amanda Shoebridge, email [amandas@lincolnheights.school.nz](mailto:amandas@lincolnheights.school.nz) for more information. The Library will be open for the Summer Reading Programme on the following days:

Friday 3 January 10am – 2pm

Thursday 9 January 10am – 2pm

Thursday 16 January 10am – 2pm

Thursday 23 January 10am – 2pm

Thursday 30 January 10am – 2pm

Last week we welcomed Colwill School year 7/8s for a friendly game of 7's hosted at Lincoln Heights. Lincoln Heights convincingly took out the bragging rights! Huge thanks to Mr Tuck for organising the competition! Watch this space for a rematch in 2025!



On 22 November we were advised by the Ministry of Education of a **Whooping Cough epidemic** being declared across Aotearoa New Zealand.

Whooping Cough can be particularly severe, and sometimes fatal, for babies, many of whom require hospital care. Health NZ Te Whatu Ora is encouraging those who are pregnant or have regular contact with young babies or preschool children to *check they are up-to-date with Whooping Cough vaccinations.*



Advice about vaccines and immunisation records for children aged 16 and under is available from the free vaccination Healthline on 0800 28 29 26, 8am to 8pm, seven days a week. Māori, Pacific and disability support services are available to provide assistance.

If you have a child moving into year 7 next year please remember they need to be wearing the blue polo shirt. These can be purchased online from NZ Uniforms. If you wish to purchase a senior hoodie to replace your child's green polar fleece, these are also available from NZ uniforms. If you want, you can have your child's first or last name (nick names are not allowed) applied in either green or white to the back of the sweatshirt – NZ Uniforms can do this for an additional cost or you can get it done by someone else. Please note, the blue polo shirt and senior hoodies are for year 7 and 8 only.



Next year we will be having a focus on uniforms across the school, but particularly in the year 7 and 8's to help them better prepare for high school. Polo shirts, hats, senior hoodies and polar fleece jumpers can be purchased directly from NZ Uniforms, navy skirts, shorts, shorts and pants can be purchased from any uniform retailer (Postie Plus, The Warehouse, K-mart) so please take advantage of the start of year back-to-school sales. Please ensure that your child is wearing the correct uniform on the first day of school – if you are in financial hardship, please come and talk to me and we may be able to help. Remember to name all uniform items on the inside with first and last names as this makes returning items much easier.

Remember to update us if your address or phone number has changed or it changes over the break. You can pop an email to [lhs@lincolnheights.school.nz](mailto:lhs@lincolnheights.school.nz) with your child's name and the new number or address. Similarly, if you want to change your emergency contact, let us know. The reason for keeping contact information up-to-date is important. Sometimes we need to get in touch with whanau when a child is sick or injured and when we try, the number has been disconnected. We also post voting nominations and information for Board elections to the address we have on file, and if this address is wrong, you won't get the opportunity to participate in this important election process.

On **Monday 16 December** children will be meeting their teacher for 2025. This can be an unsettling time for our children as they move away from someone they have formed a trusting relationship with, to a brand new teacher and sometimes a new team. It is important that you are positive when talking about these changes and all the new friends they will make. Where possible children are moved in group of familiar peers. There are times when we find a friendship which has made learning more challenging for both children and in this case, we try to separate them into different classes to ensure they both have the opportunity to flourish in their learning. If your child comes home with concerns or worries please encourage them to be resilient and talk about the positive opportunities. We encourage whanau to leave their child in the class they are placed in for at least 5 weeks. This gives enough time to establish peer friendships and a trusting relationship with the teacher. Please feel free to contact me on [leishab@lincolnheights.school.nz](mailto:leishab@lincolnheights.school.nz) if you have any questions or concerns.



You may be wondering who won the gingerbread house competition, it was a tie between The 'Haunted Christmas' created by Kauri Team and the impressive 'All Inclusive Christmas House' by Kahukura Team. All the houses were amazing and we are really lucky to have such a talented team working to enhance the learning of our children.

There was no prize, just creative bragging rights, but I might try to find a little something in my Principal's cupboard to recognise their accomplishment.

Thank you to everyone who voted on line and to all the children and whanau who came in and voted in person. We even had visitors voting!

Have a great week, hang in there, Christmas is just around the corner!

Leisha Byrnes

**PRINCIPAL**

***Our motto – In The Gate by Half Past Eight Guarantees You Won't be Late!***

## OUR BOARD MESSAGE

Our trustees are:

Raewyn Clark, Presiding Member      [bot@lincolnheights.school.nz](mailto:bot@lincolnheights.school.nz)  
 Kiri McCabe, Ken Tuioti, Sarah Pope, Robert Walker, Maria Sydney and Gordon Irving (Staff Trustee)

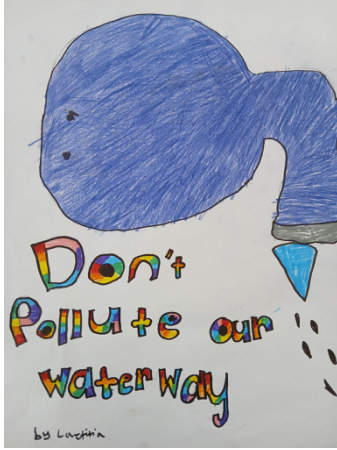
Monthly Board meetings are held in the staffroom, commencing at 5.30pm. If you would like to attend a meeting please email [bot@lincolnheights.school.nz](mailto:bot@lincolnheights.school.nz)

At our November meeting the Board received the end of year reports from all Team Leaders and Management Unit holders. This was a wonderful opportunity to celebrate the significant achievements of the past year, including strong positive shifts in student achievement data. There were great outcomes from the management unit holders including environment initiatives (Enviro group), whanau breakfasts, PB4L (restorative practices) and the continued growth and development of our kapahaka group, among others.

The Board is very proud of our school's achievements over the past year and thank all of our staff and students for their efforts. We look forward to building on these achievements in 2025. We wish all of our school community an enjoyable festive season, and will be ready to welcome our tamaraki back on 3 February 2025 for a new school year.

## WHAT'S COMING UP

<b>TERM FOUR</b>		
Week 8	Wednesday, 4 <sup>th</sup> December	Festive Mufti Day, gold coin donation Newsletter published Facebook, Skool Loop app, website Kapahaka classes, 3.30pm to 4.30pm
	Friday, 6 <sup>th</sup> December	Fiafia EOY celebration, on top field from 4pm
Week 9	Monday, 9 <sup>th</sup> December Wednesday, 11 <sup>th</sup> December Thursday, 12 <sup>th</sup> December Friday, 13 <sup>th</sup> December	Free Siva dance classes, 3.15pm, all welcome Board meeting, 5.30pm, staffroom Yr 7/8 prizegiving, 5pm Yrs 0-2 prizegiving, 9.15am - 11am Yrs 3-6 prizegiving, 11.45am - 1pm Yrs 8 dinner, 5.30pm, staffroom Yr 7/8 dance, 6.30pm, hall
	Saturday, 14 <sup>th</sup> December	Lincoln Music School, end of year concert, 9am, hall, all welcome
Week 10	Monday, 16 <sup>th</sup> December Tuesday, 17 <sup>th</sup> December Wednesday, 18 <sup>th</sup> December	Meet the 2025 teacher Last 2025 newsletter Big Day In fun day, whole school <b>School closes for 2024 at 1.00pm</b>



Room 5 have been working with community groups to learn about river habitats and the amazing species that they support. We visited our local stream at the Lowtherhurst Reserve. Although the water quality was pretty good, we saw a HUGE pile of rubbish. We decided to learn more about how our school and our community could protect our precious waterways, and spread the message to everyone!



"I've learned that there's a lifecycle of whitebait. It starts with an egg and turns into a larvae and then into a whitebait." - Brent



"We went to the stream to learn about good habitats by checking the 5 Cs: current, clean, clear, creatures and cool (shade). Bron and Kate showed us that it's important to keep the stream clean so fish don't die. They are our local animals." - Nathan



"I learned how to keep our stream clean by writing signs that say 'don't throw rubbish'. I learned how rubbish gets in our sea and river. First people throw rubbish and then the wind blows the rubbish into the drains and then it appears in the rivers and sea. I even learned how far we can see in dirty water and in clean water." -Ryan

"When we went to the stream, the first activity we did was to measure the temperature of the water. If it's too hot the fish will die. The best part was when we saw inanga. Everyone was so excited. Our second activity was looking for pollution or chemicals. The good thing is we saw no chemicals. The bad thing is there was lots of pollution which makes sense because there were houses near the stream. When we went on the bridge we saw an eel rolling like a snake. The second activity was two trays filled with cool river animals like shrimp, worms. Some ways to help is to pick up rubbish and wash your car on the grass if you can." - Kingston

"Streams can become unhealthy because people throw rubbish in the streams. Also people washing their cars on the road, making the soap and oils go into the drains." - Kquaylin

"As a school, we could have a rubbish pick up day. When washing your cars, be more aware of where the water is going. Be respectful of where you are dumping your rubbish." - Grayson



**sKids Peninsula**  
Waipani Road, Te Atatu  
Monday 6 January to Friday 31 January 2025

**0800 274 172**  
Site Ph: 027 285 1704

**HOURS: 7.30AM TO 5.30PM**  
**SHORT DAYS: 8.30AM TO 3PM**



Scan for further info and to secure a spot in one of our holiday programmes today!

[www.skids.co.nz/holiday-programmes](http://www.skids.co.nz/holiday-programmes)



\*Based on one child full day at rate 0. OSCAR subsidy eligibility criteria will apply. More families now qualify for OSCAR Subsidy, please visit [www.skids.co.nz/oscar-subsidy](http://www.skids.co.nz/oscar-subsidy) for eligibility and entitlement.

<p><b>MON 6 JAN</b></p>  <p><b>CAMP KICK-OFF</b> <b>ONSITE INCURSION: CAMP KICKOFF</b> Kick off Holiday HQ Summer Camp with a fun welcome event. Enjoy round-robin games and activities to start your summer adventure with a blast!</p> <p>SHORT DAY CHARGE \$65.50 FULL DAY CHARGE \$71.00 FROM AS LOW AS* \$7.20</p>	<p><b>TUE 7 JAN</b></p>  <p><b>BEACH DAY</b> <b>ONSITE INCURSION: BEACH DAY</b> Today, we're bringing the beach to you! Enjoy beach volleyball, sand art, and plenty of fun.</p> <p>SHORT DAY CHARGE \$65.50 FULL DAY CHARGE \$71.00 FROM AS LOW AS* \$7.20</p>	<p><b>WED 8 JAN</b></p>  <p><b>FRIENDSHIP FEST</b> <b>PREMIUM INCURSION: PICKLEBALL - BEACTIVE</b> Get ready to run and have a blast with the team from BeActive as we learn how to play Pickleball!</p> <p>FULL DAY CHARGE \$71.00 EXPERIENCE FEE \$11.00 DAILY TOTAL \$82.00 FROM AS LOW AS* \$18.20</p>	<p><b>THU 9 JAN</b></p>  <p><b>SPLASH ZONE</b> <b>MAKE &amp; TAKE: SUMMER CAMP BUCKET HATS</b> Show off your creative flair with DIY Summer Bucket Hats to take home. Dive into water play, water games, and a cool science experiment!</p> <p>SHORT DAY CHARGE \$65.50 FULL DAY CHARGE \$71.00 EXPERIENCE FEE \$10.00 FROM AS LOW AS* \$17.20</p>	<p><b>FRI 10 JAN</b></p>  <p><b>CAMPFIRE FUN</b> <b>ONSITE INCURSION: CAMPFIRE FUN</b> Get crafty with campfire crafts, DIY lanterns, and tent-making! Enjoy yummy s'mores for a true camping experience.</p> <p>SHORT DAY CHARGE \$65.50 FULL DAY CHARGE \$71.00 FROM AS LOW AS* \$7.20</p>	<p><b>MON 13 JAN</b></p>  <p><b>OUTDOOR ADVENTURE</b> <b>ONSITE INCURSION: OUTDOOR ADVENTURE</b> Let's explore the great outdoors! Join an exciting scavenger hunt, fly your own paper plate kite, and enjoy a day packed with outdoor fun.</p> <p>SHORT DAY CHARGE \$65.50 FULL DAY CHARGE \$71.00 FROM AS LOW AS* \$7.20</p>	<p><b>TUE 14 JAN</b></p>  <p><b>CAMP GAMES</b> <b>ONSITE INCURSION: CAMP GAMES</b> It's all about camp games today! Test your skills with DIY Tic-Tac-Toe and a Painting challenge with a twist!</p> <p>SHORT DAY CHARGE \$65.50 FULL DAY CHARGE \$71.00 FROM AS LOW AS* \$7.20</p>	<p><b>WED 15 JAN</b></p>  <p><b>INTO THE WILD</b> <b>EXCURSION: KIWI VALLEY</b> Take a tractor or Pony ride and feed all the friendly farmyard animals. Explore the maze and find the hidden caves. Its all here at Kiwi Valley!</p> <p>FULL DAY CHARGE \$71.00 EXPERIENCE FEE \$17.00 DAILY TOTAL \$88.00 FROM AS LOW AS* \$24.20</p>	<p><b>THU 16 JAN</b></p>  <p><b>WATER PLAY DAY</b> <b>MAKE &amp; TAKE: LIFESAVER RESCUE BOATS</b> Splash into fun with an exciting water relay! You'll also build and race your own rubber band-powered paddle boats to take home with you!</p> <p>SHORT DAY CHARGE \$65.50 FULL DAY CHARGE \$71.00 EXPERIENCE FEE \$10.00 FROM AS LOW AS* \$17.20</p>	<p><b>FRI 17 JAN</b></p>  <p><b>COLOUR WARS</b> <b>ONSITE INCURSION: COLOUR WARS</b> Game on! Team up with friends for an epic colour war showdown. Compete in fun challenges and see who will come out on top.</p> <p>SHORT DAY CHARGE \$65.50 FULL DAY CHARGE \$71.00 FROM AS LOW AS* \$7.20</p>
--	--	---	--	---	---	--	---	--	---

Please ensure all food complies with allergy guidelines. Contact your programme for detailed information. Please note that programmes and surcharges may be subject to change. Visit our website for the most up-to-date information. Special Experiences such as Excursions, Premium Incursions, and Make & Take activities are an additional cost to the daily fee and are charged for each child that attends whether they choose to participate or not.



# Welcome to sKids!




Dear Families,


We are delighted to welcome you and your child to our sKids community! We recognise that starting school can be a whirlwind of emotions. Rest assured, our team is here every step of the way to provide support and ensure a seamless and enjoyable transition to 'Big School'!


Inside this welcome pack, you'll find information about our before and after school programmes: **Rise then Shine** and **Stay and Play**. We also introduce you to **Holiday HQ**, our exciting holiday programme which is jam-packed with a variety of activities, incursions and off-site experiences.

At sKids, we are passionate about helping the next generation navigate their tomorrow. We do this by providing industry leading programmes that are designed to enhance children's social and emotional development beyond the school curriculum. Our research shows that out of school care can have long term benefits on children's wellbeing, by setting them up with life skills that prepare them for the future.

**What's Inside Your sKids Welcome Pack:**

- 

**Programme Brochure:** Learn more about our programmes, the framework we use and what to expect when your child attends each session. Please be aware that your site may not run every programme, however Holiday HQ can be attended at our other nearby schools. Talk to your Programme Leaders or take a look at the Key Site Information sheet in this pack, to find out what's on at your site!
- 

**Key Site Information Sheet:** A comprehensive guide to your sKids site, filled with valuable insights, policies, and guidelines to ensure a smooth journey with sKids.
- 

**OSCAR Subsidy Factsheet:** Detailed information about the Out of School Care and Recreation (OSCAR) Subsidy, how to apply, and what it could mean for your family.

As a special welcome to sKids, your child will receive a 'Hello Token' from us on their first day at sKids during Term 1 2025! Enrol and book today to get a sKids branded bag tag and sticker sheet when your child joins our programme!

Together, let's embark on this enriching journey of growth, discovery, and fun. We're thrilled to be a part of your child's adventure and look forward to many memorable moments ahead.

Kind regards,  
The Team at sKids

**Have more questions?**  
Our Customer Service Team are here to help!  
**Email:** [hello@skids.co.nz](mailto:hello@skids.co.nz)  
**Phone:** 0800 274 172



### Bye Bye Bin Tags

Have you seen this friendly team out on your street recently? They are spreading the word that it's time to start using up the last of your bin tags. From Monday 2 December 2024, you won't need a tag to have your council rubbish bin emptied in the Waitākere area. If you still have a few left, you could sell or give them to friends or whānau who might need one. You can also get a refund on a limited number of tags or request a different bin size if that works better for your household.

Visit [aucklandcouncil.govt.nz/ratesfunded](https://aucklandcouncil.govt.nz/ratesfunded) to find out more.

### Getting it Right on Bin Day

There are new, simpler rules for what can and can't go into your recycling bin. Remember, no lids of any type go in the recycling bin anymore - they are too small for the sorting machines. Using your food scraps bin means less in your rubbish bin too. You can put in all food scraps, including leftovers, bones, and fruit and vege scraps. EcoMatters Environment Trust can help you get it right on bin day.

Visit [ecomatters.org.nz/binday](https://ecomatters.org.nz/binday) to learn more.



# OUR ANNUAL PLAN

## LINCOLN HEIGHTS SCHOOL ANNUAL PLAN 2024

To raise student achievement to 70% 'At' or 'Above' in core curriculum areas and increase student engagement (to 80% in every class) for ALL learners.

<b>Domain 1 – STEWARDSHIP</b> Through increased engagement and strengthened learning focused relationships	<b>Domain 2 – LEADERSHIP</b> Through transparent leadership (with children at the heart of decision making) and a focus on the development of our Middle Leaders	<b>Domain 3 – RELATIONSHIPS</b> Through authentic relevant and engaging opportunities for ALL learners across ALL contexts – within school, with whanau and within our community	<b>Domain 4 – TEACHING</b> Through differentiated learning programmes based on current student data – including <b>Kahukura</b> and <b>Moemoe Fou</b>	<b>Domain 5 – CAPABILITY</b> Through responsive Professional Learning Programmes and individual accountability	<b>Domain 6 – EVALUATION</b> Through established systems to monitor and review progress towards achievements of schoolwide and individual goals
---	---	---	--	---	--

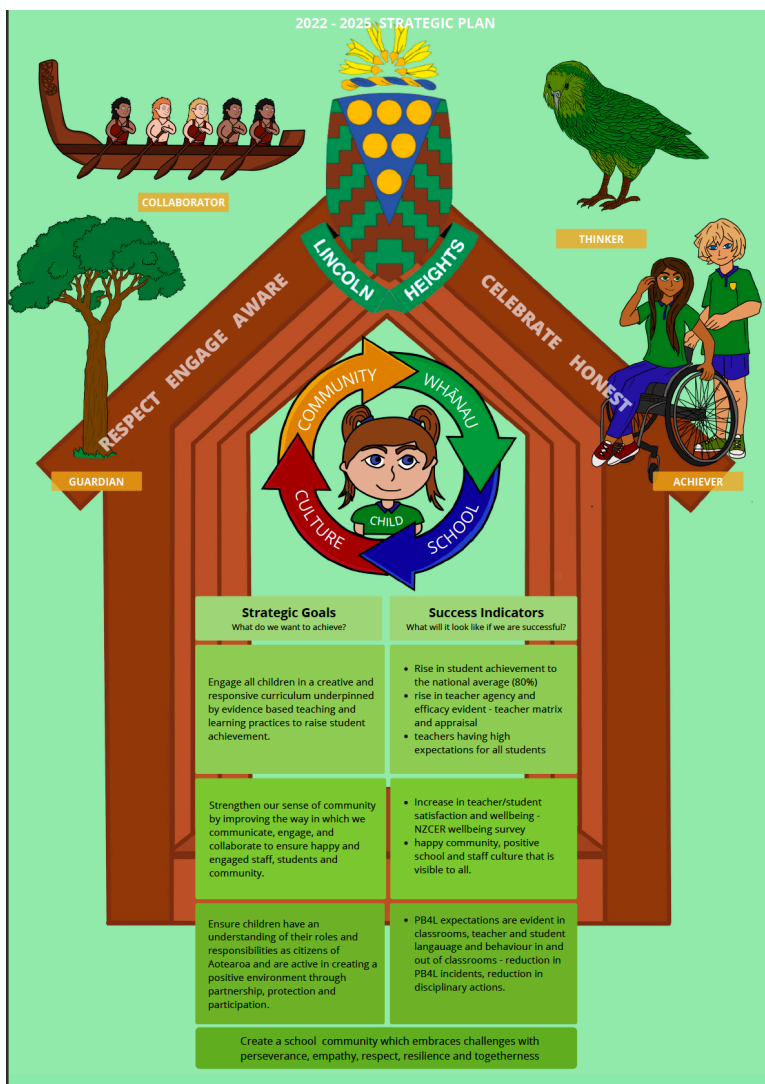
<b>LEARNERS AT THE CENTRE</b> Learners with their <b>whānau</b> are at the centre of education	<b>BARRIER FREE ACCESS</b> Great education opportunities and outcomes are within reach for every learner	<b>QUALITY TEACHING AND LEADERSHIP</b> Quality teaching and leadership make the difference for learners and their <b>whānau</b> .	<b>FUTURE OF LEARNING AND WORK</b> Learning that is relevant to the lives of New Zealanders today and throughout their lives	<b>WORLD CLASS INCLUSIVE PUBLIC EDUCATION</b> New Zealand education is trusted and sustainable
---	---	--	---	---



<b>Strengthen our sense of community by improving the ways in which we communicate, engage and collaborate to ensure happy and engaged staff, students and the wider community.</b>	<b>Engage all children in a creative and responsive curriculum underpinned by evidence based teaching and learning practices to raise student achievement.</b>	<b>Ensure children have an understanding of their roles and responsibilities as citizens of Aotearoa and are active in creating a positive environment through partnership, protection and participation</b>
<p>Strategy 1 Use M-unit roles to increase opportunities to build learning community with whanau and wider</p> <p>Strategy 2 Regular monitoring by PB4L team within school to measure success of PB4L PLD and implementation of plans</p> <p>Strategy 3 Increase capability in teaching writing to ensure teachers feel confident in their teaching of written language</p> <p>Strategy 4 Acknowledge and celebrate staff, student and community success and promote them through the newsletter, Facebook and <b>Skool</b> Loop to continue to raise our positive school profile</p>	<p>Strategy 1 Use GAP analysis to inform teacher needs as well as student next steps and to monitor progress Use IEP process for <b>Kahukura</b> and vulnerable learners</p> <p>Strategy 2 Increase teacher confidence in using data to inform planning and evaluate their own effectiveness Middle Leadership PLD and support</p> <p>Strategy 3 Use of school wide planning and clear demonstration of DAT, TA role and differentiation to achieve accelerated learning across all school settings: <b>Moemoe Fou, Kahukura</b> and Mainstream</p> <p>Strategy 4 Provide opportunities for teachers to access PLD in implementing Te <b>Mātaiahua</b></p>	<p>Strategy 1 Use Check and Connect roles to increase engagement for Maori and Pacific students and their families – raise attendance and engagement to 80% in 2024 and 90% in 2025</p> <p>Strategy 2 Use in class support to ensure equitable outcomes for all students including Maori, Pacific, ESOL and those students identified 'at risk'</p> <p>Strategy 3 Use the skills and knowledge within <b>Kahukura, Moemoe Fou</b> and wider staff, to increase teacher capability around inclusion, culturally responsive practise and equity</p> <p>Strategy 4 Provide opportunities for students to demonstrate their leadership and service within our community (school and wider) to make a positive difference</p>

MEASURES – All staff are responsible for ensuring we reach these goals

- 70% of children 'at' or 'above' in Reading, Writing and Mathematics
- 15% increased engagement of all learners – demonstrated through engagement observations
- 60% of students are able to say where they are at in their learning
- 70% of children achieving 'Well/Below' will make accelerated progress
- All teachers are confident using PAL to determine levels of achievement
- Moderation is consistent and regular across the school – every term
- Increased teacher confidence in teaching writing - teacher survey shows 20% improvement
- Average rates of attendance increase across the school to 80% daily
- All **BoT** members are confident of their understanding of the school targets
- There is increased visibility of the **BoT** in a range of media – online, newsletter, events
- 95% of parents attend parent interviews
- All teachers show improvement against the teacher matrix -
- There is a reduction (-15%) in PB4L incidents and improved school wide results in NZCER 'Well-Being' survey (+20%)
- 100% of **Focus/Target** students will make accelerated progress



# Lincoln Heights School

Thanks to the below businesses for sponsoring our school app:

**Pform .nz** Drama  
HipHop  
Musical Theatre

**Clive Whalen** BARFOOT & THOMPSON  
The right salesperson makes all the difference

**BRIDGESTONE TYRE CENTRE Westgate**

**MORRISONS FUNERALS** Tap Here

**the doctors massey medical**

**AMOS DETAILING LTD**

**Domino's Massey**

**Ngā Tamariki Pūwai o Tāmaki AUCKLAND KINDERGARTEN ASSOCIATION**  
Discover the **AKA** Difference  
We're in your neighbourhood!  
aka.org.nz

**SCRATCHPAD TECHNOLOGY LEARNING CENTRES**  
GIVE YOUR CHILD HEAD START IN TECHNOLOGY LEARNING  
CODING | ROBOTICS | 3D PRINTING

**RE/MAX TEAM JERRY**  
Partners  
Sales Consultant - Koorosh Del Carpio & Emily Choi  
Sure Capital Real Estate Limited (Licensed REAA 2008) 021 492 420 & 021 187 2848

If you would like to advertise on the Lincoln Heights School Skool Loop App please email [Content@skoolloop.com](mailto:Content@skoolloop.com)



To download our app: In Google Play & App Store search 'Skool Loop' & choose School once installed.